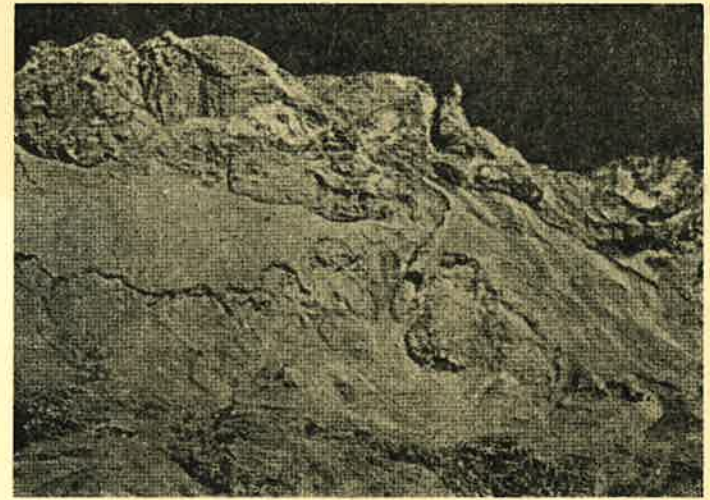


LOT'S WIFE
PILLAR



The bag attached contains "Salt Rock", a portion of "The Hill of Sodom" on the bank of the Dead Sea.. If you do not believe it is salt taste it.

Late photograph of the "Hill of Sodom" showing picture, known as Lot's wife. Genesis 18th and 19th chapters and Luke 17:32.

Sodom and Gomorrah are two of the five cities which were located on the plains of Jordan that were well watered everywhere, "Even as the garden of the Lord"—(Genesis 13:10), before they were destroyed. There was rained upon these cities brimstone and fire from the Lord out of heaven in the time of Abraham and Lot. Genesis 19:24. Their wickedness was an offense against nature and their sin very grievous (Gen. 18:20, 21), and we find that their fate is used as a warning to those living afterwards who reject the "Book of Books", or the Holy Bible.

E X T R A P A P E R S

We had quite a few old left over Reporters, so decided to send one of them with the June paper. Should you receive two papers instead of one kindly give or send the extra copy to someone you are sure will be interested in it. Thanks very much.

You will also observe that the corner is cut on this envelope. We did that here, to save postage as postage costs just half price with the corner cut.